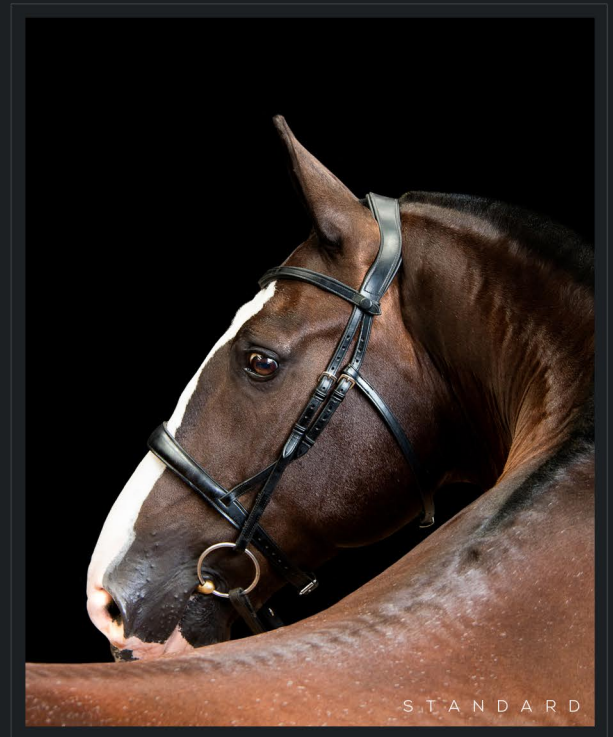
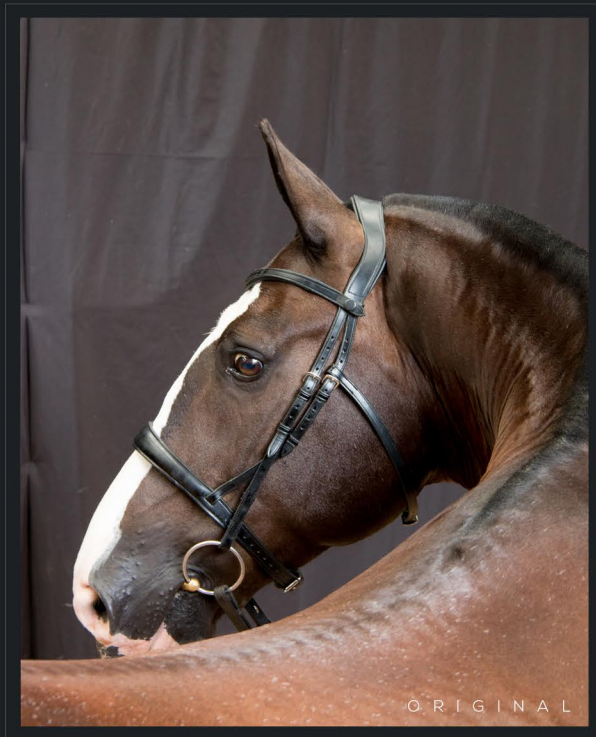


S T A N D A R D - V - B E S P O K E

The differences between standard & bespoke editing can feel a little confusing! While all images are edited with meticulous attention to detail - standard edits offer studio style black backgrounds with the removal of unwanted elements, such as my photo halters & subtle enhancement of natural features. Bespoke editing allows richer creativity - such as coloured backgrounds & digital locations.



Above is the original, unedited photograph. Top right is a standard black background. The bottom image is a custom example.

Standard edits usually take under two hours while more specialist or creative edits taking considerably longer. This final example took six hours to edit & would represent a limited edition work.

I'm happy to advise prior to booking & welcome all suggestions!

